

KELOWNA
CHRISTIAN
SCHOOL



**MIDDLE SCHOOL
HANDBOOK
2024 - 2025**

TABLE OF CONTENTS

WELCOME & INTRODUCTION.....	2
MISSION STATEMENT	3
CORE VALUES	3
MIDDLE SCHOOL ROUTINES	4
CLASS SCHEDULE & COURSE OFFERINGS	4
LEAVING DURING THE DAY	5
LUNCH BREAK	5
CLOSED CAMPUS	5
ADMISSION TO BUILDING	5
PARKING LOT	6
BICYCLES / SKATEBOARDS / ROLLERBLADES	6
SCHOOL VISITORS	6
LOCKERS / LOCKS	7
SPORTS PROGRAMS	7
GYMNASIUM USE	8
CHAPEL	8
STUDENT PHONE	8
LOST & FOUND	8
TEXTBOOKS & SCHOOL SUPPLIES	8
SCHOOL NURSE	8
MEDICATIONS	8
MEDICAL ROOM	9
WE ARE NOT NUT FREE	9
WE ARE A SCENT-SENSITIVE CAMPUS	9
LEARNING UPDATES	9
RECOGNIZING STUDENT ACHIEVEMENT	10
CODE OF CONDUCT.....	11
GUIDING PRINCIPLES	11
OUR LIFESTYLE STATEMENT	11
RESTORATIVE PRACTICES	11
SCOPE OF THE CODE OF CONDUCT	12
SUSPENSIONS	12
EXPULSIONS	13
STUDENT THREAT ASSESSMENT PROTOCOL	13
ATTENDANCE	13
CLASSROOM BEHAVIOUR	14
OUT OF CLASSROOM BEHAVIOUR (ON OR OFF CAMPUS)	14
OFF-CAMPUS TRIPS	15
DRESS CODE	16
DRINKING & DRUGS	17
SMOKING/VAPING/E-CIGARETTES	17
TECHNOLOGY	18
VIOLENCE, BULLYING AND HARASSMENT	19
LINES OF COMMUNICATION/QUESTIONS & CONCERNS	21
CONDUCT RELATED APPEAL PROCEDURE	21

WELCOME & INTRODUCTION

Welcome to Middle School! Our desire is to create a community that offers high-engagement learning within a supportive environment. Middle School is a time when the scope of a student's world expands considerably: spiritually, intellectually, socially, emotionally, and physically. We want to turn students towards growth, effort, and the thrill of the attempt, while supporting them in an environment of love, community, and a sense of belonging.

One could think of our Middle School approach as a play on the word "fuse."

FUSE

1. *Verb* – to unite or blend into a whole (the purposeful creation of a Middle School community in which students are accepted, and connected with caring adults and peers)
2. *Noun* – a device to ignite an explosion (high-engagement learning, experiences, and opportunities that ignite the imagination in each student and allow them to identify, grow and connect)

When establishing the culture of a new Middle School campus, Romans 14:19 was the foundation. "So let us **STRIVE** for the things that bring peace and build each other up."

S- strong by getting up when we fall, and a **safe** place to be yourself

T- teachable by being humble learners, and **thankful** for the people and experiences God has placed in our lives

R- respectful of others' needs, and **restorative** through forgiveness and the freedom to make mistakes

I- inviting to guests and visitors, and **inquisitive** about others rather than being judgmental

V- vigorous in our effort, and **vocal** if something needs to be better

E- engaged in learning opportunities, and responsible for our school **environment**

We look forward to making deep connections with our students and sparking their excitement for learning. Ultimately, our goal is for students to grow as disciples of Christ, discovering and enjoying the perfect plan that He has for each of them. The Middle School journey is a journey of identity creation, as students are shaped through their relationships, priorities, decisions, and routines that are already forming who they will be as adults. Middle School is not just the space in the middle between elementary school and high school, thus defined by what it *isn't*; Middle School is its own space: inclusive, positive, and challenging.

On behalf of the Middle School staff,

Lisa Gossen
Middle School Principal
lisa.gossen@kcschool.ca
250.762.4500

MISSION STATEMENT

The vision of Kelowna Christian School **is to be a Christ-like community passionately transforming our world.** Our vision is to see our students using their gifts and inclinations to be passionately engaged in God's work.

The mission of Kelowna Christian School is **to educate, equip, and inspire our school community to become disciples of Jesus who love and serve God and others.** Kelowna Christian exists to educate and inspire our students so that they can be effective, active and engaged servants of Jesus.

Life changing education. World changing students.

CORE VALUES

Biblical Foundation

At KCS we take the Bible seriously. As the inspired Word of God, it's the foundation of everything we do as a school - from our approach to education to relationships and discipline.

Prayer

We are a community committed to prayer. It's a source of strength and an acknowledgement that we are utterly dependent on God and His purposes.

Discipleship

We are committed to building disciples. It's not an add-on. It's why we exist. Our community is devoted to help students become confident, loving, and passionate influencers, who through their individual giftedness impact the world in the way God is calling them.

Creativity

Confronted with a rapidly changing world, we believe students and staff must be creative and flexible in their approach to new challenges.

Excellence

This does not simply mean high test scores. We mean students should strive to do well, and through encouragement and engagement achieve their personal best in a process of continuous improvement. Excellence at KCS means we push ourselves and our students to keep getting better using our best effort.

Perseverance

True excellence requires an ongoing effort - perseverance and grit. A willingness to accept failure and use it as a springboard for continued effort. As a Christian school we acknowledge and want to develop the inclination to trust God to be there in the hard times.

Integrity

Acting with integrity means a willingness to make the right call even when no one sees it or whether it comes with a personal cost.

MIDDLE SCHOOL ROUTINES

CLASS SCHEDULE & COURSE OFFERINGS

Generally, most Grade 6 classes are taught by the students' homeroom teachers, although some subjects are taught by subject specialists (e.g. French, Music). Grade 7 & 8 students are taught by all teachers from that grade level, as well as subject specialists (e.g. French, Music) and Explorations teachers (e.g. Foods).

8:40 am	Warning bell
8:45 am	Block 1
10:00 am	Block 2
11:05 am	Block 3
12:05 pm	Lunch
12:50 pm	Period 4
1:55 pm	Period 5
2:55 pm	End of Classes

Students have five classes per day; each one is 60 minutes long with the first class of the day slightly longer to allow for start of the day routines and morning devotions. Students are given a maximum of five minutes to move to their next class, although some classes may continue from one block to another without a break.

All **Grade 6 & 7** students take Music (instrumental band) and French. They also have two Explorations classes per week, in which grade level students are mixed together. Explorations classes are comprised of required modules that all Grade 6 & 7 students cycle through (these cover Arts Education and Applied Design, Skills, and Technologies).

All **Grade 8** students take French. They have three Explorations classes per week, in which all Grade 8 students are mixed together. These Explorations classes are offered by the Grade 8 teachers and specialists. The purpose of Explorations 8 classes is to provide a variety of learning experiences that offer greater breadth, promote a well-rounded learning philosophy, and give students an introduction to electives in High School, with more movement, choice, and variety of teachers. Students are required to cover both ADST and Arts Education categories with their Explorations 8 selections.

This year, grade 8 students choose from the following offerings:

ADST Courses (will be placed in at least three)	Arts Education Courses (will be placed in at least one)
Foods Leadership Development Programming Textiles Video Editing Woodworking	Band Drama Visual Arts

Students choosing Band choose *three* other offerings, which creates the timetable space to allow Band to run throughout the entire year. Students sign up for Explorations 8 courses online in June.

Explorations 8 classes take place three times per week. Students will take two Explorations courses per term, alternating within a week between their "A" day course and their "B" day course. Students will take Exploration courses #1 and #2 in the first term, #3 and #4 in the second term and #5 and #6 in the third term.

LEAVING DURING THE DAY

Students who need to leave during the day must sign out at the school office. In the interest of student safety and legal responsibility, the office requires an email, note, phone call, or visit from a student's legal guardian before that student will be permitted to sign out.

If a student feels ill, they must check in at the office rather than phoning a parent directly. If a student calls a parent who picks her/him up without the office's knowledge, it causes alarm for school staff who are responsible for the student.

If a student will be signing out for a series of days (e.g. to drive to gymnastics lessons every Monday at 2:30pm or for a series of physio. appointments) one note or phone call can cover this. Students who leave early are responsible for work missed.

LUNCH BREAK

Grade 6 & 7 students eat lunch in their homerooms for 15 minutes before having a break for 25 minutes. Grade 8 students eat in their choice of Grade 8 homeroom classrooms.

During the lunch break, grade 6, 7, and 8 students are required to go outside. On specified days there will be other available options for students (such as the pod or ping pong).

CLOSED CAMPUS

Up to and including Grade 8, students are required to remain on the school property until dismissed at the end of the day. Students requiring early dismissal for special circumstances such as medical appointments may be dismissed with a note from a parent and must sign out through the office. When a parent comes to take a student out for lunch, the student is still required to sign out at the office. Parents should be aware that they cannot take other students out for lunch without the other parent's written permission. When leaving campus, students must sign out and sign back in at the office.

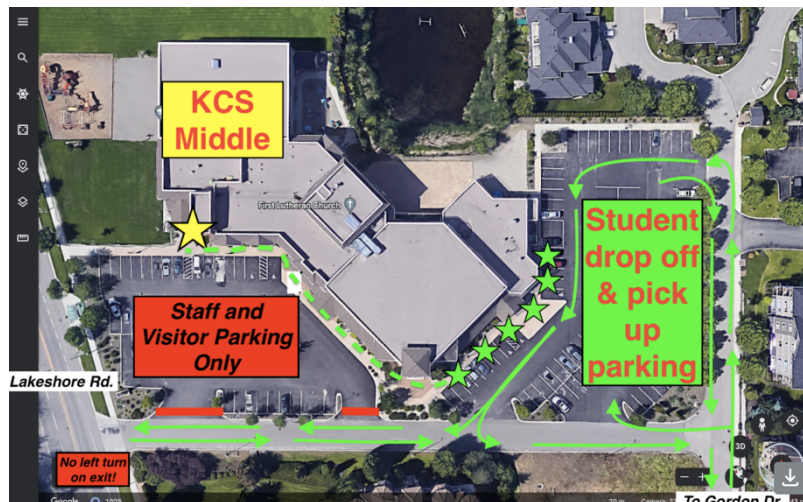
ADMISSION TO BUILDING

Students are permitted to enter the school foyer any time after 7:45am if they use the privilege responsibly and wisely. Failure to act responsibly may lead to loss of the privilege. Students involved in after school activities may not have access to their lockers after 4:00pm.

PARKING LOT

Drive slowly and use extreme caution on the school property and in the vicinity of the school. To make our entrances and parking lot safer, the following guidelines are in effect:

- Parents are welcome to enter the campus from either Lakeshore Road (there is a left turning lane) or Lequime road.
- The front parking lot (off Lakeshore Road) is for KCS and church staff as well as visitors during the day. This is not for student drop offs or pickups at the regular times.
- The back parking lot is for regular student drop off and pick up.
- There is no stopping for drop off or pick up in the lane ways.
- Speed in the laneways is 30 km/hr. We want to be good neighbors to the surrounding developments.
- Students should be dropped off in the back parking lot (green stars area) and then use the sidewalk for the short walk (dashed green line) around the building towards the school entrance (yellow star). The other entrances are off limits.
- The parking lot is off limits to MS students during the school day.
- If students are being picked up after 3:15pm, they will be at the main KCS entrance (yellow star) as supervision in the back parking lot ends at 3:15pm.



BICYCLES / SKATEBOARDS / ROLLERBLADES

Bicycles must be parked in the stands provided (one at middle school entrance and one by the drop off area) and must be securely locked at all times. Rollerblades and bicycles are not to be used during the school day. If used to travel to school, skateboards should be walked into the building and stored in the student's locker.

SCHOOL VISITORS

As a general guideline, students should not have visitors at school. Students from other schools or from out of town may be given permission to visit classes only if the following procedures are followed before the day of the visit:

1. Authorization must first be received from the school principal. If granted, she will give you a form for all your teachers to sign. Students from Kelowna will not normally be allowed to visit classes unless prior arrangements have been made with parents who are interested in enrolling the students in our school.

2. Prior to the day of the proposed visit, the student sponsoring the visit must clear the visit with all the teachers involved and get their signature on the form.
3. The sponsoring student must return the form completed with all the necessary teachers' signatures to the principal for her final approval.
4. The student who invites the visitor is responsible for her/his behavior; if visitors do not comply with school rules and etiquette they may be asked to leave the school grounds.

LOCKERS / LOCKS

Students will be assigned lockers on the first day of school, and it is their responsibility to see that the locker is securely locked at all times. Only school locks are permitted to be used on the lockers and the combination is registered with the homeroom teacher. If a lock is lost, the student must pay a \$10.00 replacement fee.

Students are encouraged not to give their locker combination to other students. A \$5.00 service fee may be charged to students that wish to get a different lock from the office because of this reason.

Students must not use any substance that will mark the inside the lockers. Material that contradicts Biblical principles or the school's values should not be posted in the lockers.

Failure to keep lockers secure and in good order may result in the loss of locker privileges.

SPORTS PROGRAMS

The Physical Education program of the Middle School is comprised of components:

1. Physical Education classes
2. Health classes
3. Intramural sports (lunch hours)
4. Inter-school sports

All students in grades 6 - 8 are required to take part in PE classes. If a student cannot take part in classes for any reason, a parent must communicate this directly to the PE teacher – this information cannot simply be passed on verbally by a student.

All PE students at KCS are required to wear the KCS PE strip (shorts and T-shirt). A student missing PE strip must still participate in their PE class but their Work Ethic may be impacted by this lack of preparation; a pattern of missing PE strip will be referred to the principal. Damaged or defaced PE strip will need to be replaced. Extra items can be purchased through the KCS office.

The inter-school sports program offers a variety of opportunities for students to participate on sports teams and compete in an array of sporting events, which in the past have included volleyball, basketball, swimming, cross-country running, golf, and track and field. All athletes will complete a commitment form called the "Knight's Code." This code clearly outlines the requirements of being on a school team. If you are interested in the inter-school sports

program, contact the school's Athletic Director, Jenn Hanenburg. At the grade 6 - 8 levels, inter-school team participation is based on commitment (attending practices and games) rather than try-outs.

GYMNASIUM USE

Running shoes must be worn for all gym activities (this includes before school, noon hour, and after school events). Student activities in the gym require teacher supervision at all times. Students wishing to use the gym before school and at lunch time must wait for the teacher supervisor before entering the gym.

CHAPEL

Middle School chapel takes place on Wednesday mornings at 8:50am in the Sanctuary. They are a time of worshiping together in community and learning about God. Students contribute to chapels by speaking, playing in the worship band, or working with the audiovisual equipment.

STUDENT PHONE

A free phone is available in the office. This phone should only be used outside of class time.

LOST & FOUND

The Lost and Found Cabinet for clothing is outside the gym in the middle school foyer. Smaller items will be kept in the office. Any Lost and Found articles that are not claimed will be donated to charities.

TEXTBOOKS & SCHOOL SUPPLIES

Textbooks will be provided by the school. Students are responsible for all textbooks issued to them. All books are numbered and barcoded and a record of books issued and their condition is kept by the librarian. Students will be charged for lost or damaged books.

Some school supplies are the responsibility of each student. The supply lists may be accessed through the school web site.

SCHOOL NURSE

The Public Health Nurse is in contact with the school on a regular basis. Students or parents may contact the nurse by phoning her at 250-469-7070.

MEDICATIONS

Medications cannot be administered to students without a "Request for Administration of Medication Form" being filled out by parents. The form is available at the office and once completed is kept on file. Medications administered under the instructions of a medical doctor must be accompanied by a written directive from that doctor indicating what medication is to be dispensed and under what conditions. This directive is placed on file in the office. For safety reasons, all medications must be stored in the office and not in student lockers.

MEDICAL ROOM

There is a medical room located in the main office. It can be used by students that have become ill and are waiting for a parent to pick them up.

WE ARE NOT NUT FREE

The Lakeshore campus (Middle School) is not nut free, meaning that students are not prohibited from bringing food with nut ingredients (e.g. peanut butter). Unlike an elementary campus with younger students, Middle School students are more aware of necessary precautions. Obviously, the school takes steps to protect students with severe allergies by taking the following steps:

- training staff to respond to emergency situations triggered by severe allergies
- taking steps in the classroom to minimize risk, and if necessary, advising other families of how to keep students with severe allergies safe
- requiring parents of students with severe allergies to alert the school of the condition and to complete a medical response plan in case of incidents

WE ARE A SCENT-SENSITIVE CAMPUS

Due to health concerns arising from exposure to scented products by several students and staff members, the Lakeshore campus (Middle School) is a scent-sensitive environment for all employees and visitors. Students, staff, and visitors are asked to not use products at school that have the purpose of giving off scent, including perfumes, aftershaves, cologne, body sprays, scented candles and potpourri, diffusers, essential oils and strongly scented lotions. These types of products are designed to be airborne, and a scent ban is a reasonable requirement to adequately limit harmful exposure at the Lakeshore campus.

LEARNING UPDATES

The year is divided into three reporting periods, with learning updates issued for each term. Student progress is indicated by a proficiency scale indicator for that term's learning standards, a Work Ethic indicator, and comments. An overall proficiency scale in each course will be issued on the final learning update in June. Student voice and reflection will also be included on the second and third learning updates.

Students are assessed on the work ethic responsibility (punctuality, preparedness for class) and engagement (engagement with class activities, on-task and positive behavior, impact on one's own learning as well as others). Work ethic is reflected on during each term, so students receive ongoing feedback and are aware of how their work ethic is impacting their own, and others', learning.

By using the Parent Portal of MyEdBC (online gradebook and attendance record) or by viewing student work on Google Classroom, parents may view student progress at any time.

RECOGNIZING STUDENT ACHIEVEMENT

Several Grade 8 Leadership Awards are presented at the year's final chapel, recognizing how Grade 8 students have provided positive leadership through various means, including academics, athletics, arts, and community.

CODE OF CONDUCT

GUIDING PRINCIPLES

KCS's mission, core values, curriculum and community life are formed by a firm commitment to the person and work of Jesus Christ as declared in the Bible. This identity and allegiance shapes an educational community in which we pursue truth and excellence with grace and diligence, treat people and ideas with charity and respect, think critically and constructively about complex issues, and willingly respond to the world's most profound needs and greatest opportunities.

OUR LIFESTYLE STATEMENT

We believe that living a Christian life is something that is done in community and that our maturing in the faith is not an individual pursuit between us and God, but a communal activity in which we support, exhort, and hold each other accountable for our actions. Accountability works best within the context of meaningful relationships and not in punitive action. We desire to know each other well enough so that we can 'speak into each other's lives' with deep and meaningful relationships (staff, students, parents, families).

The apostle Paul exhorts us to live by the spirit and not to become weary of doing good (Gal. 6:9). Our call is to live for the glory of God in all we do as we extend the grace he has shown us to the people all around us. This could be described as our 'lifestyle statement.'

"Whatever you do, work at it with all of your heart as working for the Lord and not for men."
Col 3:23.

RESTORATIVE PRACTICES

It is our goal to restore brokenness in our community. KCS is committed to working with restorative practices when working with parents and students. We know that people are happier, more cooperative and productive, and more likely to make positive changes when those in positions of authority do things with them, rather than to them or for them. It is our goal to use restorative practices whenever possible when dealing with discipline issues at KCS.

Restorative practices usually begin with 5 questions:

What happened?

What were you thinking at the time?

What have you thought about since?

Who was affected by what you have done? In what way?

What do you think you need to do to make things right?

(Taken from the International Institute for Restorative Practices, Canada - www.iirp.org)

We live in a fallen world and recognize that we all make mistakes and poor choices. When a student is involved in a difficult situation or incident, he/she needs to find ways to get back on track. Non-responsive students who don't genuinely take responsibility for their actions are difficult to re-integrate into our school community, however, responsive students who strive to correct their ways, live with integrity, value living in community and work to restore what is broken find great success. As a school community, we seek to work with students who are responsive.

SCOPE OF THE CODE OF CONDUCT

Clearly, the implications of our “Lifestyle Statement” apply beyond the day-to-day limits of the school day. For instance, harassing another individual through social media or by other means would be considered a violation of the Code of Conduct regardless of where and when it occurred.

Having said this, the “rules” as defined in the Code of Conduct below apply explicitly to students going to and from school and to students engaged in, present at, or attending:

- a) any activity on school premises whether during a regular school day, outside the regular school day, or on a day that is not a school day;
- b) travel on a school bus or other transportation contracted or arranged by the school;
- c) any activity sponsored by, organized by or participated in by the school regardless of time or place;
- d) any activity in and around the school premises occurring during the school day or outside the school day.

SUSPENSIONS

As part of the corrective discipline process, a student may be suspended when student behaviour is judged to be in serious conflict with a safe and positive learning environment, or when the school’s progressive interventions have failed to correct inappropriate behaviour, or when all other procedures have failed.

By definition, a suspension is the removal of a student’s right to attend regularly scheduled classroom instructional sessions. Suspensions, both in-school and out-of school, may have one or more of the following objectives:

- protect the suspended child and/or other children and/or staff from dangerous behaviours;
- deter other students from similar behaviour;
- plan proactive educational interventions;
- initiate problem clarification and solving;
- remediate and correct inappropriate behaviour;
- improve student behaviour.

In-school – student is assigned to a specific area of the school where they will spend their school day. Lunch and other breaks will be at non-standard times. Students should bring work that may be completed during the in-school suspension.

Out-of-school – student is prohibited from being on from school property and participating in school activities at any time (before, after or during school) for a defined period of time.

EXPULSIONS

The school may refuse to offer an educational program where the student:

- a) has verbally or through their actions refused to comply with this Code of Conduct, or other rules or policies of the school; or
- b) has failed to apply himself or herself to his or her studies

STUDENT THREAT ASSESSMENT PROTOCOL

A threat is an expression of intent to do harm or act out violently against someone or something. Threats may be verbal, written, drawn, posted on the Internet or made by gesture. Threats must be taken seriously, investigated and responded to. A student threat assessment will be initiated when behaviours include, but are not limited to, serious violence or violence with intent to harm or kill, verbal/written threats to harm/kill others, Internet website/social media threats to harm/kill others, possession of weapons (including replicas), bomb threats and fire setting. Click to [view full policy and procedure](#).

ATTENDANCE

Statement of Purpose/Rationale

- There is a direct correlation between student attendance and achievement.

Conduct

- Students and parents are responsible to ensure that satisfactory attendance is maintained.
- Students are required to attend all classes each school day unless he/she is: 1) ill, 2) participating in an approved school activity, or 3) absent for a parent/guardian approved situation/activity.
- If a student is absent, parents are asked to contact the school by email or at 250-762-4500 by 9:00 a.m.
- A student who needs to leave during the school day is expected to sign out at the office (parental/guardian permission is required).
- Whenever possible, medical, dental, and other appointments should be scheduled outside of class time.
- Where an absence is excused, students are responsible for arranging to complete any missing work with their teachers. All missed assignments need to be completed.
- Parents should provide written notice to the office regarding planned absences as soon as possible. For absences created by choice (e.g vacations), the school does not provide work ahead of time; work and assignments will have to be completed upon return and may involve committing time after school to work with the teacher rather than expecting missing concepts to be taught in class.

Consequences

- The school will make phone contact to confirm the absences of all students.
- Unexcused absences may result in a detention or other similar consequence
- Repeated unexcused absences may result in a student being asked to withdraw from the school

CLASSROOM BEHAVIOUR

Statement of Purpose/Rationale

- The environment of a classroom or teaching area must be safe and conducive to the learning of its students.
- While it is the responsibility of the teacher to foster a learning environment, it is the responsibility of students to contribute to a safe and positive learning environment for the sake of all learners.

Conduct

Acceptable

- Students demonstrate respect for self and others
- Students arrive to class promptly and prepared to learn with all appropriate materials
- Students comply with teacher directions for lesson activity
- Students attend to the lesson and apply themselves to assigned tasks
- Students complete assigned school work on time

Unacceptable

- Behaviour that is disrespectful and/or disruptive to the learning environment.
- Behaviour that is defiant.
- Behaviour that is distracting and off task
- Arriving late for class
- Attending class without the necessary materials
- Non-participation
- Failure to complete school work or attend to deadlines.

Possible Consequences

- Verbal reminder of expectations
- Relocation in the class seating plan
- Phone call to parents/guardians from teacher
- Referral to the office
- Temporary removal from class
- Detention and/or in-school suspension
- Meeting with parents/guardians, student, teacher, and administration
- Out-of-school suspension
- Permanent removal from class
- Withdrawal from school

OUT OF CLASSROOM BEHAVIOUR (ON OR OFF CAMPUS)

Statement of Purpose/Rationale

- Students, staff, and guests have a right to move safely and comfortably throughout the school and school grounds.

Conduct

Acceptable

- Students demonstrate respect for self and others.

- Students move through the school and school grounds in a safe and orderly manner.
- Students demonstrate respect for property.
- Students use trash and recycle bins.
- Students comply with directions of staff on supervision.

Unacceptable

- Behaviour that is disrespectful.
- Public displays of affection in a romantic or sexual manner.
- Rough play such as pushing, and shoving.
- Vandalizing property in any manner.
- Littering
- Failing to clean up after oneself (i.e. leaving lunch bags on tables or floors)
- Defiant disregard to the directions of supervising staff.

Possible Consequences

- Verbal reminder of expectations
- Referral to the office
- Short term “time out” from selected areas of the school
- Long term “time out” from selected areas of the school
- Appropriate punitive activity such as cleanup duty
- Detention and/or in-school suspension
- Out-of-school suspension
- Withdrawal from school

OFF-CAMPUS TRIPS

Curricular and Extra-curricular – Participant or Spectator

Statement of Purpose/Rationale

- Participation in extracurricular activities is a privilege. A student who participates must accept his/her responsibilities to the group, supervisor and to KCS.
- A high level of work ethic/performance is expected within a student's academic course load. Administration and/or the Athletic Department may withdraw the student's privilege to participate in extracurricular activities, if a high level of work ethic/performance is not being met.

Conduct

Acceptable

- Students, whether he/she is a participant or spectator, must behave in a mature, responsible and considerate manner at all times.
- Students must advise subject teachers, well in advance, of class time that will be missed.
- Students must make arrangements, in advance, with subject teachers for missed tests or work
- Students will attend classes, extracurricular practices and competitions /performances.

Unacceptable

- Students must not be absent from school, on the day of the event.
- Any behaviour that is considered inappropriate at the school is deemed inappropriate during curricular or extra-curricular trips (as a participant or spectator)

Consequences

- Students absent from school, on the day of the event, will not be permitted to participate in the event.
- Any behaviour that is considered inappropriate at the school is deemed inappropriate during curricular or extra-curricular trips and similar consequences will apply.

DRESS CODE

Statement of Purpose/Rationale

- Our goal in this community is to live faithfully under God both personally and communally and as such, we have standards for staff and student dress. These standards reflect our community and provide guidelines for clothing that will be appropriate for school activities. We understand that our individual choice of dress is an important aspect of our community as it allows for uniqueness and allows for differences amongst our students.
- The school administration will ultimately determine if a student's apparel is appropriate for the school setting.

Conduct

Acceptable

- Students are to maintain the dress code standards during regular school hours and while representing KCS at school sponsored functions.
- Since the word "appropriate" can be subjective in various settings, the following are some guidelines to help inform how to dress appropriately at school.
 - Footwear must be worn on school property (including proper athletic shoes for PE classes).
 - Clothing must cover the bottom, the chest and midriff, from the front, back, and sides. Clothing should not be see-through or expose underclothes.

Unacceptable

- Clothing should not be see-through or expose underclothes.
- Tight muscle shirts, camis, and tube tops should not be worn as outer garments.
- Staff and students must not wear clothing with words or graphics that objectify others, use profane or foul language, or promote discrimination, violence, crime, sexual acts, or alcohol/drugs.

Consequences

If a student is wearing something inappropriate for the school setting, he/she will be engaged in a conversation and expected to reconsider his/her choice. Attire inappropriate for our school setting needs to be changed before the student will be re-admitted to class.

School discipline process will be applied to those community members who do not reconsider their choices.

DRINKING & DRUGS

Statement of Purpose/Rationale

- The bringing of drugs or alcohol onto school property or appearing on school property while under the influence of drugs or alcohol is a contravention of the declaration regarding student behaviour that each student is required to sign each year as a condition of enrollment.

Conduct

Acceptable

- Students are encouraged to make healthy choices, which includes not using alcohol or non-prescribed drugs.

Unacceptable

- Using alcohol or non-prescribed drugs of any kind or being under their influence is not permitted on school property or during school activities.

Consequences

Consequences for using or being under the influence of alcohol or drugs on school property or during school activities:

- Will result in an automatic indefinite suspension
- Depending on circumstances, may be referred to the School Discipline Committee which will consider whether expulsion is merited.

SMOKING/VAPING/E-CIGARETTES

Statement of Purpose/Rationale

- The school is a tobacco-free zone. In compliance with provincial legislation, smoking is not permitted on school property. E-cigarettes and similar devices are also precluded under this and other legislation.

Conduct

Acceptable

- Students are encouraged to make healthy choices, which include not using tobacco products.

Unacceptable

- Possession, or use, of tobacco of any kind is not permitted on school property or on school trips. This includes smokeless tobacco, including e-cigarettes and vaporizers.

Consequences

Consequences for possession and/or use on school grounds or school trips may include the following escalating actions:

- Suspension from school
- Withdrawal

TECHNOLOGY

Statement of Purpose/Rationale

Personal Electronic Devices – The use of any of these devices must not invade or infringe upon the personal privacy or safety of any member of our school, and must not interfere with the learning environment.

- To promote an interactive learning environment with real face to face connection and community, MS students may not use phones or other personal devices (e.g. earphones and gaming systems) during the school day, including class breaks and lunch break. Similarly, Chromebooks should not be used at lunch unless there is a supervised educational purpose. These items may be used before or after school, and should be placed in their lockers between the 8:45am and 2:55pm bells so they do not come to class or create distraction. The use of any device must not invade or infringe upon the personal privacy or safety of any member of our school (video or pictures without verbal permission)
- Possible consequences: Personal devices will be confiscated and returned at the end of the school day; personal electronic devices will be confiscated and turned over to administration; repeated incidents will result in devices being returned directly to the parents and not the students or the privilege of bringing a device to school will be removed. Exceptions: teachers may give permission for devices to be brought to class for educational uses.
- On school day trips, students may be told that they are not to bring personal devices. They must be left at home or in student lockers at school, otherwise devices will be confiscated.
- On school overnight trips, including sports team overnight trips, students are not permitted to have their personal devices overnight in the hotel room. Devices will be collected by chaperones at “lights out” and returned in the morning. Any device determined to be withheld from collection will be confiscated and returned to the MS principal at the end of the trip.
- The use of Chromebooks, which are owned by the school and signed out to students for the year, as well as the use of Google Apps for Education and school accounts, is covered by the Chromebook User Agreement, which is distributed to families at the beginning of the year.
- Our computer networks and technology resources are an educational tool to facilitate learning.
- These networks and technology resources provide users with the opportunity to prepare for the technological world in which we live, and provide access to on-line resources enabling integration in all areas of learning.

Conduct

Acceptable

- All users must sign and return the Acceptable Use Forms distributed at the beginning of the school year.
- All students must have parental permission to access school technology.
- All students are responsible for ensuring that at all times they are making appropriate use of all electronic information resources
- All electronic resources are to be used in a responsible, ethical and legal manner.

- All students must follow the guidelines outlined for school trips (day and overnight trips).
- This policy also applies to any personal electronic device(s) brought to school.

Unacceptable (includes but is not limited to):

- Intentional access to sites which contain information that is pornographic, racist, sexist, malicious, vulgar, immoral, or promotes or fosters hatred or illegal activities, as well as any other sites that are prohibited by the school administration
- Plagiarism – downloading material from the Internet and presenting it as your own without acknowledgement
- Playing on-line games
- Using instant messaging programs
- Downloading and/or installing movies, games, music files
- Sending or displaying offensive messages or pictures
- Use of impolite, abusive, or obscene language
- Harassing, insulting, or attacking others
- Accessing unauthorized computer systems, folders, and files
- Physical damage to computer equipment, computer systems, or networks by the spreading of computer viruses
- Intentional damage to computer equipment, computer systems, network equipment or peripheral devices
- Installation and use of any Peer to Peer programs
- Ordering or purchasing personal resources on-line
- Not submitting personal devices for overnight collection on overnight trips (including sports trips).

With ongoing changes to technology, it is clear that KCS is unable to identify all current or future unacceptable uses of the School Network. Therefore, KCS reserves the right to add to this list of unacceptable uses as circumstances arise.

Consequences

- Personal electronic devices (e.g. phones and earphones/buds) will be confiscated and returned at the end of the school day
- Personal electronic devices will be confiscated and only returned directly to the parents
- Verbal warning and/or other appropriate consequence
- In cases of plagiarism, the normal minimum consequence is the work must be redone and resubmitted to demonstrate the learning goals of the assignment.
- Suspension of computer privileges
- Suspension from school (in-school, out-of-school)

VIOLENCE, BULLYING AND HARASSMENT

Statement of Purpose/Rationale

- Every student/staff/visitor at KCS has a right to a safe and welcoming environment.
- Every student has the opportunity to learn conflict resolution skills to be socially responsible.

- Students/staff/parents/guests at a KCS activity should feel KCS is a safe and welcoming learning and working environment.

Conduct

Acceptable

- Students demonstrate respect for self and others.
- Students feel safe to report violent/harassing behaviour.
- Students assert their rights in a non-threatening manner.
- Students recognize and reject violent or harassing behaviour

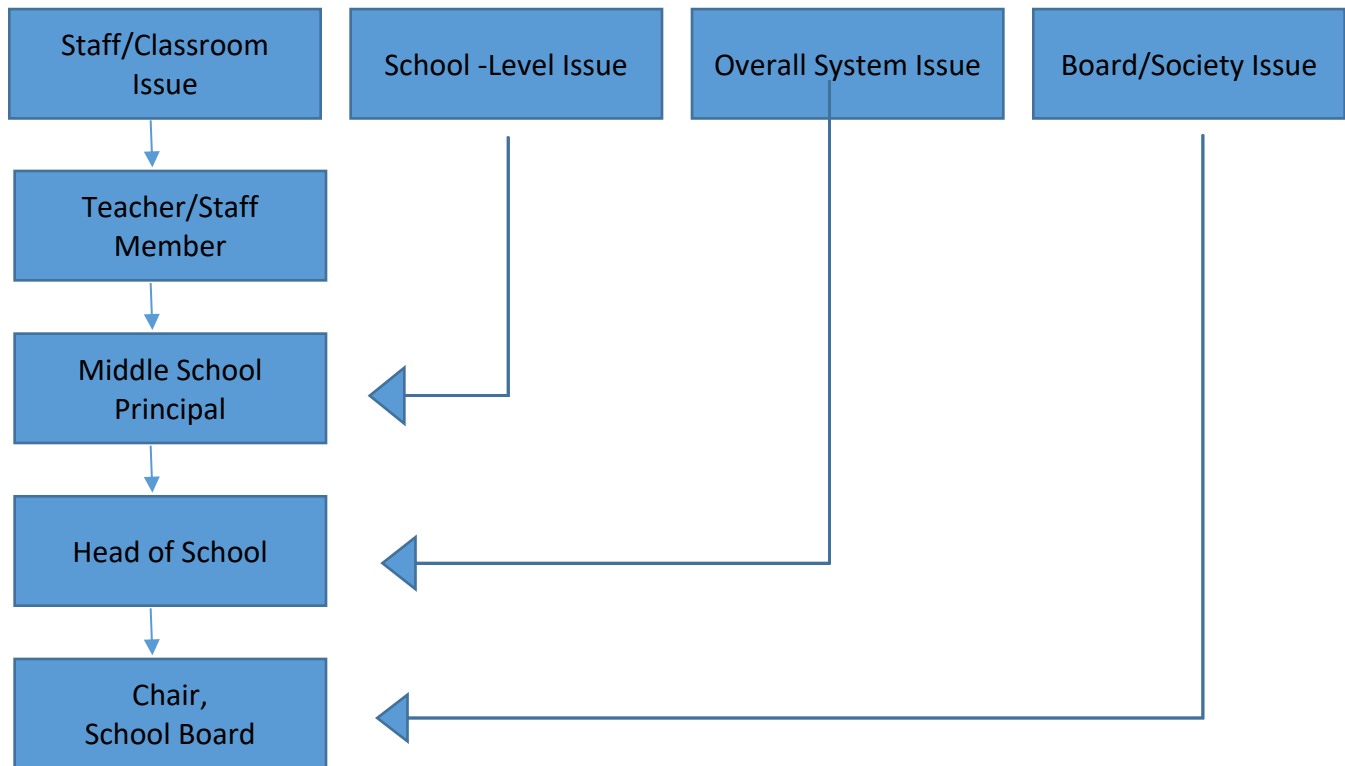
Unacceptable

- Fighting, instigating conflict, active spectating, and post-fight hype are unacceptable.
- Any form of harassment is unacceptable (verbal, internet/technological, emotional, intimidation, sexual, racial, exclusion, rumours, mocking, ignoring, shunning, slander, and any behaviours that would fall under this category but are not mentioned).
- Promotion and/or acceptance of violence as an acceptable method of resolving conflict is unacceptable.
- Any type of abuse (physical, sexual, emotional) is unacceptable.

Consequences (may involve but are not limited to any of the following)

- Student reprimand
- Detentions
- Restriction of activities
- Suspensions (in-school, out-of-school)
- Teaching passive bystanders of how their behaviour contributes to escalation of the situation
- Involvement by the RCMP
- Restitution – community and/or school service, peer mentoring, financial restitution, counselling, mediation, meaningful apologies (verbal or written), meeting with victim

LINES OF COMMUNICATION/QUESTIONS & CONCERNS



CONDUCT RELATED APPEAL PROCEDURE

Parents and students are entitled to seek a review of any decision which significantly affects a student's education. Kelowna Christian School wants to ensure that you receive a fair hearing if you believe that a decision is unfair or unreasonable. For that purpose, we have established an appeal procedure. Details of this procedure are available from school administration as well as being published on the KCS website in the policy section.